

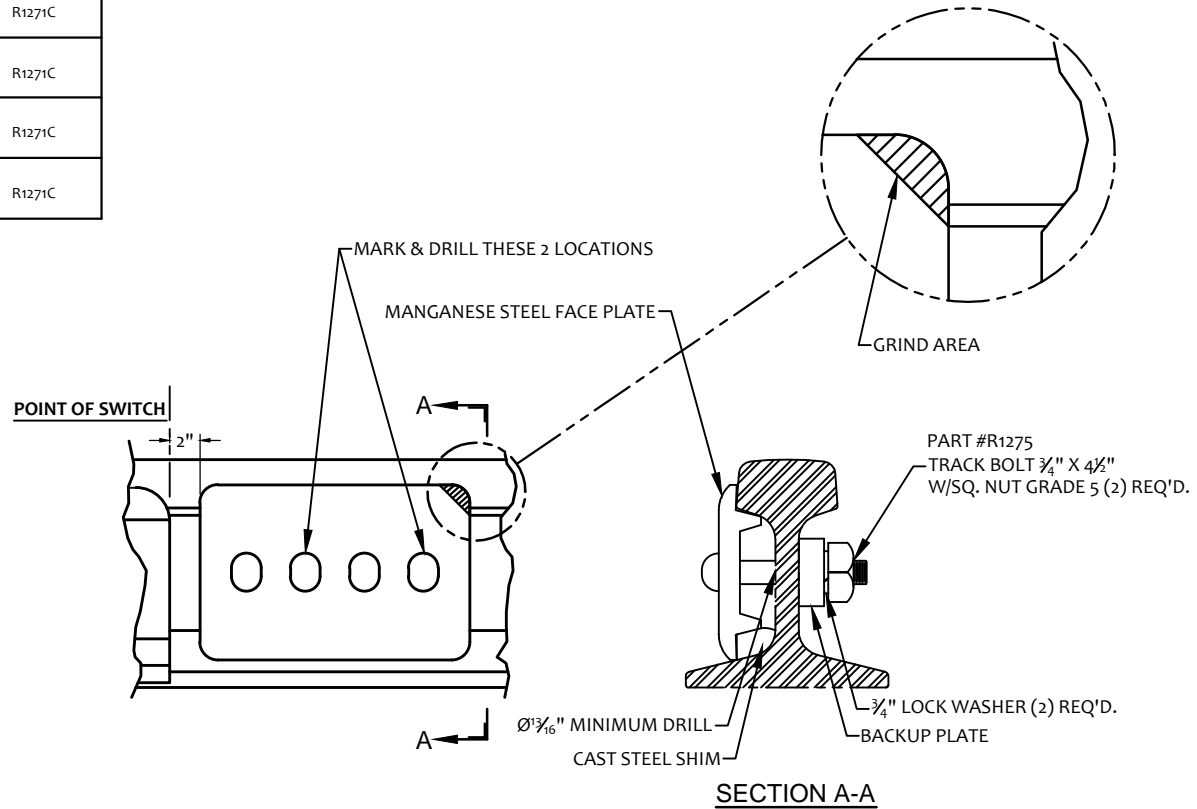
MODEL NO.	RAILS	MANGANESE STEEL FACE PLATE	CAST STEEL SHIM	BACKUP PLATE
<input type="checkbox"/> SPP-1	85lb & 90lb ASCE; 100lb ARA-B; 100 PS	SPP-100-F	SPP-90-S	R1271C
<input type="checkbox"/> SPP-2	100lb & 110lb AREMA; 100lb ARA-A	SPP-110-F	SPP-121-S	R1271C
<input type="checkbox"/> SPP-3	100lb ASCE	SPP-100-F	SPP-120-S	R1271C
<input type="checkbox"/> SPP-4	105lb NYC (DUDLEY); 130lb PS	SPP-110-F	SPP-120-S	R1271C
<input type="checkbox"/> SPP-6	112lb, 115lb, & 119lb AREMA	SPP-130-F	SPP-121-S	R1271C
<input type="checkbox"/> SPP-7	133lb AREMA	SPP-141-F	SPP-133-S	R1271C
<input type="checkbox"/> SPP-8	141lb AREMA	SPP-130-F	SPP-120-S	R1271C
<input type="checkbox"/> SPP-9	131lb & 132lb, 136lb, 140lb AREMA; 141 AB; 127lb NYC	SPP-141-F	SPP-132-S	R1271C
<input type="checkbox"/> SPP-10	90lb ARA-A	SPP-110-F	SPP-90-S	R1271C
<input type="checkbox"/> SPP-15	130lb AREMA	SPP-141-F	SPP-90-S	R1271C

APPLICATION PARAMETERS:

The Nolan "button-style" Switch Point Protectors are designed for slow speed territory and are ideally suited to rail yards, industrial sites, and private sidings. A maximum speed of 10 mph (16 kph) is advised. Switch Point Protectors are installed to protect conventional switches in the front of siding turnouts where the crossing rate is 1 in 8.25. Install the Switch Point Protector on the stock rail 2" (50mm) in front of the appropriate switch point tip. (See attached SPP installation sheet)

NOTICE:

Grinding of face plate may be necessary on worn rail. Grind upper corner shown below of face plate to reduce blunt edge to $\frac{1}{16}$ " thickness.



1	REV BY	IOV	4/4/13	5	REV BY		TOLERANCES (EXCEPT AS NOTED)	the NOLAN company, Bowerston, Ohio			
ADDED MODELS TO CHART				DECIMAL: .XXx.03 .XXXx.005				THE PRINT AND ALL INFORMATION THEREON IS THE PROPERTY OF THE NOLAN COMPANY AND MUST BE KEPT CONFIDENTIAL. THIS INFORMATION MUST NOT BE COPIED OR MADE PUBLIC UNLESS SO AUTHORIZED BY THEM AND IS SUBJECT TO RETURN UPON DEMAND.			
2	REV BY	PAS	8/08/13	6	REV BY		FRACTIONAL: ±1/16	CHECKED BY	DATE		
MODEL NUMBERS CHANGED				ANGULAR: ±2°				APPROVED BY	DATE	DRAWN BY	DATE
3	REV BY	IOV	5/18/15	7	REV BY		MATERIAL:			PAS	11/07/12
ADDED MODEL ADJUSTED RAIL SIZES CHANGED PARTS IN LIST				SCALE:				SWITCH POINT PROTECTORS		FILE NAME	SPP.dwg
4	REV BY	PAS	1/22/16	8	REV BY		FULL	PLOT SCALE:	1/4	DRAWING NO.	SPP
ADDED APPLICATION PARAMETERS. REMOVED SPP-5											

INSTALLATION INSTRUCTIONS - SWITCH POINT PROTECTOR

1. LOCATE SWITCH TYPE PER SKETCH BELOW & IDENTIFY SWITCH POINT LOCATION.
2. EDGE OF SWITCH SHOULD BE 2" FROM SWITCH POINT.
3. LOCATE SWITCH POINT FACE PLATE AND MARK DRILL LOCATIONS FOR $\frac{13}{16}$ " DIA. **MINIMUM** HOLES (2 REQ'D.)
4. AFTER DRILLING HOLES, ASSEMBLE SWITCH POINT PROTECTOR AS SHOWN IN VIEW AT LEFT & TIGHTEN BOLTS. LUBRICATED THRD. - 200 FT/LB NON-LUBRICATED THRD. - 260 FT/LB.

NOTE: FACE PLATE MAY BE REVERSED AFTER SUFFICIENT WEAR IS APPARENT.

